

SHORE VIEW NEWS

October 2024



SPOOKY SEASON IS UPON US

The crisp fall air has us ready for a **spooktacular Halloween** celebration! Favorites like **Brews & Tattoos** and our annual **Halloween Lights Ride** are back to keep us feeling our **Spooky Spirit!** **Pumpkin Painting**, another loved tradition, is also back! Closing out the **spooktacular** month is our **Halloween Party!**

Halloween not your thing? Then how about enjoying the rich **New England Autumn** with a trip to the **Farm Store at Brooksby Farm** and a **Foliage Ride!**

October 1st is **International Coffee Day!** Pop on by on the 2nd to **celebrate** in our much loved **Shore View Cafe Coffee House.** **Join us** for a custom hot or iced coffee!

10/2 Coffee House

10/7 Birthday Tea

10/8 Pumpkin Painting

10/8 Foliage Ride

10/9 & 10/ 23 Ruru Visits

10/10 Peabody Senior Center Big Band outing

10/10 Halloween Lights Ride

10/16 Lunch: The Continental

10/18 Ice Cream Ride

10/21 Special Craft

10/21 Brooksby Farm Store

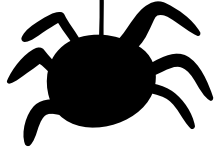
10/22 Shopping: Big Lots

10/24 Brews and Tattoos

10/25 Halloween Treats for Lynn Woods School Buddies

10/29 Ride to Lynn Woods School

10/31 Annual Halloween Party!

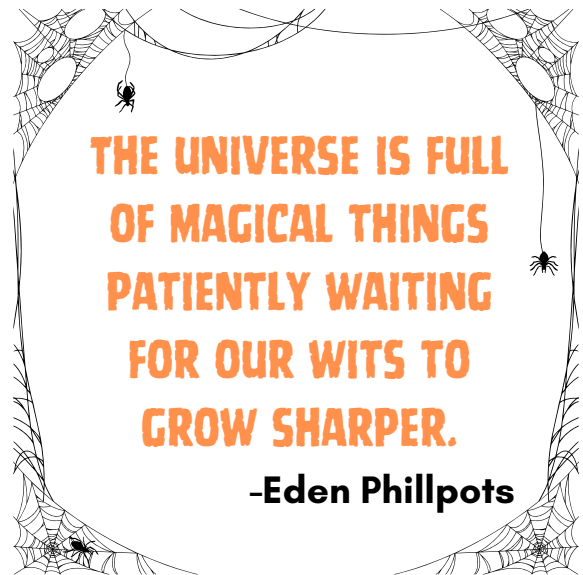


LAST CALL FOR DONATIONS

Our **toiletry bags** for the homeless will be assembled at the **beginning of November!**

We are so thankful for your **generous donations!** **We are not quite at our goal!**

Please consider purchasing something from our wish list on **Amazon:** <https://shorturl.at/CohbJ>



INTERNATIONAL COFFEE DAY

- **International Coffee Day** began in 2015 **to support coffee** being produced and sold according to the **Fair Trade Movement** and to celebrate coffee drinkers.
- **Coffee beans are actually seeds** from the coffee cherry grown on coffee shrubs.
- **Brazil** is the ideal place to **grow coffee** thanks to its climate and soil. It grows roughly 1/3 of all the coffee in the world.
- **Light Roast Coffee** surprisingly has a **higher** caffeine content than Dark Roast.

